

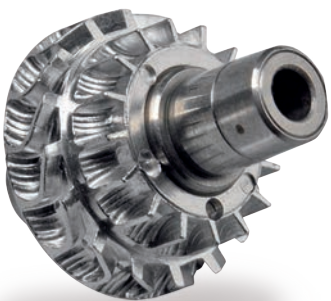
Thinking ahead. Focused on life.

# TwinPower Turbine<sup>®</sup>

## High Speed Handpieces

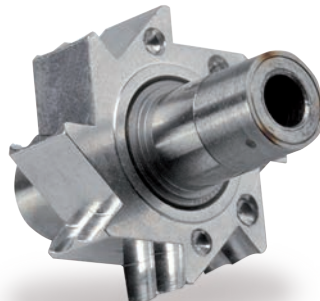
What makes TwinPower Turbine handpieces unique? Simply put, they offer better visibility with unparalleled cutting power and torque. Even under high load conditions, TwinPower's exclusive double-impeller rotor outperforms the competition. With a range of models, head designs, and price points, TwinPower Turbine is an excellent fit for any practice.

- Unique double-impellers produce high power & torque
- Compact head designs offer exceptional access
- Excellent contamination control with Zero-Drawback in the air line
- Safe, rapid braking technology
- Limited time, 30-day money back guarantee



TwinPower Rotor

36+ Impeller Blades with  
3 Drive Air Nozzles



Typical Rotor

8 Impeller Blades with  
Only 1 Drive Air Nozzle

# TwinPower Turbine Product Line

The TwinPower Turbine high speed product line has been expanded to include non-optic models, in addition to those with 25,000 LUX glass rod optics. This expansion gives customers more options to experience TwinPower's unique features at a lower price point. Non-optic models are available for High Torque, Standard, UltraE and 45°.

## TwinPower Turbine High Torque

- Head Diameter: 12 mm
- Head Height: 13.2 mm
- Optic/Non-Optic



The TwinPower Turbine high torque model is the most powerful of the product line. It delivers superior cutting efficiency and reduced preparation time.

## TwinPower Turbine Standard

- Head Diameter: 10.5 mm
- Head Height: 13.2 mm
- Optic/Non-Optic



The TwinPower Turbine standard model offers 22 watts of smooth cutting power. Clinically evaluated by several institutions, TwinPower has earned high marks for its fit to hand ergonomics, balance, visibility, power output, and braking ability.

## TwinPower Turbine UltraE

- Head Diameter: 9 mm
- Head Height: 12.7 mm
- Optic/Non-Optic



UltraE (mini) is slightly taller than UltraM and more powerful at 20 watts, but still offers a compact head that improves the clinician's view when using a mirror or microscope.

## TwinPower Turbine UltraM

- Head Diameter: 9 mm
- Head Height: 10.6 mm
- Optic



UltraM (mini) delivers 18 watts, twice the power of other popular mini handpieces. With the shortest head height, it offers exceptional posterior access.

## TwinPower Turbine 45

- Head Diameter: 10.5 mm
- Head Height: 13.2 mm
- Optic/Non-Optic



The TwinPower Turbine 45 model offers maximum access and visibility with a 45° angle and an overall head size smaller than competitive units. Rear-facing exhaust vents direct air flow away from the surgical site for patient protection.

## TwinPower Turbine Basic

- Head Diameter: 10.5 mm
- Head Height: 13.2 mm
- Non-Optic



The TwinPower Turbine Basic includes several features of the original TwinPower product line at a very economical price. It offers a 4-hole connection and chrome body.

## TwinPower Turbine 45 Basic

- Head Diameter: 10.5 mm
- Head Height: 13.2 mm
- Non-Optic






The TwinPower Turbine 45 Basic offers several features of the standard 45 including rear-facing exhaust vents. As a more economical version, it has 4-hole connection and a chrome body.

# TwinPower Turbine Optic Handpieces Specifications

Specifications	 Glass Rod Optics	 Ceramic ball bearing handpiece	 Push-button chuck		
Model	High Torque	Standard	UltraE	UltraM	45°
Connection type	Quick Connect	Quick Connect	Quick Connect	Quick Connect	Quick Connect
Power*	25 W	22 W	20 W	18 W	20 W
Rotation speed (at 0.2 MPa/29 psi)	350,000 rpm ± 30,000 rpm	370,000 rpm ± 30,000 rpm			
Air/Water ports	Air/Water: 3	Air/Water: 3	Chip air: 3 Water: 3	Chip air: 5 Water: 1	Chip air: 0 Water: 3
Head diameter	12 mm	10.5 mm	9.0 mm	9.0 mm	10.5 mm
Head height	13.2 mm	13.2 mm	12.7 mm	10.6 mm	13.2 mm
Body/Coating	Ceramic	Ceramic	Ceramic	Ceramic	Ceramic
Optics	Glass rod optics	Glass rod optics	Glass rod optics	Glass rod optics	Glass rod optics
Light intensity	25,000 LUX	25,000 LUX	25,000 LUX	25,000 LUX	25,000 LUX
Weight**	48 - 57 g	48 - 57 g	48 - 57 g	48 - 57 g	53 - 59 g
Driving air pressure	0.2 – 0.29 MPa/29 - 42 psi				
Warranty	2 years	2 years	2 years	2 years	2 years

# TwinPower Turbine Non-Optic Handpieces Specifications

Specifications	 Non-Optic	 Ceramic ball bearing handpiece	 Push-button chuck			
Model	High Torque Non-Optic	Standard Non-Optic	UltraE Non-Optic	45° Non-Optic	Basic	45° Basic
Connection type	Quick Connect	Quick Connect	Quick Connect	Quick Connect	4-hole	4-hole
Power*	25 W	22 W	20 W	20 W	22 W	20 W
Rotation speed (at 0.2 MPa/29 psi)	350,000 rpm ± 30,000 rpm	370,000 rpm ± 30,000 rpm				
Air/Water ports	Air/Water: 3	Air/Water: 3	Chip air: 3 Water: 3	Chip air: 0 Water: 3	Air/Water: 3	Chip air: 0 Water: 3
Head diameter	12 mm	10.5 mm	9.0 mm	10.5 mm	10.5 mm	10.5 mm
Head height	13.2 mm	13.2 mm	12.7 mm	13.2 mm	13.2 mm	13.2 mm
Body/Coating	Chrome	Chrome	Chrome	Chrome	Chrome	Chrome
Optics	None	None	None	None	None	None
Weight**	43 - 57 g	43 - 57 g	43 - 57 g	50 - 56 g	45 g	45 g
Driving air pressure	0.2 – 0.29 MPa/29 - 42 psi					
Warranty	1.5 years	1.5 years	1.5 years	1.5 years	1 year	1 year

\* Output power measured according to the procedure in ISO 14457 2017  
 \*\* Weight varies depending on connection type

# Connection Options

		<b>TwinPower Morita</b>	High Torque Standard UltraE UltraM 45°
		<b>KaVo® MULTIflex® LUX*</b>	High Torque Standard UltraE UltraM 45°
		<b>Sirona® R/F*</b>	High Torque Standard UltraE UltraM
		<b>W&amp;H® Roto Quick*</b>	High Torque Standard UltraE UltraM
		<b>NSK® Mach/Phatelus®/ FlexiQuick**</b>	High Torque Standard UltraE UltraM
			Basic & 45° Basic

# Ordering Information

<b>TwinPower Turbine High Torque (With Optics)</b>		<b>TwinPower Turbine High Torque (Non-Optic)</b>	
16-5339049	TwinPower Turbine 4H PAR-4HX-O (TwinPower Morita)	16-1818511	TwinPower Turbine Non-Optic 4H PAR-4HX (TwinPower MORITA)
16-5901111	TwinPower Turbine 4H PAR-4HX-O-KV (KaVo® MULTIflex® LUX*)	16-1818512	TwinPower Turbine Non-Optic 4H PAR-4HX-KV (KaVo® MULTIflex® LUX*)
16-5901154	TwinPower Turbine 4H PAR-4HX-O-SR (Sirona® R/F*)	16-1818195	TwinPower Turbine Non-Optic 4H PAR-4HX-NK (NSK® FlexiQuick**)
16-5901146	TwinPower Turbine 4H PAR-4HX-O-WH (W&H® Roto Quick*)		
16-5901138	TwinPower Turbine 4H PAR-4HX-O-NK (NSK® FlexiQuick**)		
<b>TwinPower Turbine Standard (With Optics)</b>		<b>TwinPower Turbine Standard (Non-Optic)</b>	
16-5340888	TwinPower Turbine 4H PAR-4HEX-O (TwinPower Morita)	16-1818513	TwinPower Turbine Non-Optic 4H PAR-4HEX (TwinPower MORITA)
16-5340608	TwinPower Turbine 4H PAR-4HEX-O-KV (KaVo® MULTIflex® LUX*)	16-1818514	TwinPower Turbine Non-Optic 4H PAR-4HEX-KV (KaVo® MULTIflex® LUX*)
16-5340632	TwinPower Turbine 4H PAR-4HEX-O-SR (Sirona® R/F*)	16-1818604	TwinPower Turbine Non-Optic 4H PAR-4HEX-NK (NSK® FlexiQuick**)
16-5340624	TwinPower Turbine 4H PAR-4HEX-O-WH (W&H® Roto Quick*)		
16-5340616	TwinPower Turbine 4H PAR-4HEX-O-NK (NSK® FlexiQuick**)		
<b>TwinPower Turbine UltraE (With Optics) (Mini)</b>		<b>TwinPower Turbine UltraE (Non-Optic) (Mini)</b>	
16-5356970	TwinPower Turbine 4H PAR-4HUEX-O (TwinPower Morita)	16-1818519	TwinPower Turbine Non-Optic 4H PAR-4HUEX (TwinPower MORITA)
16-5357497	TwinPower Turbine 4H PAR-4HUEX-O-KV (KaVo® MULTIflex® LUX*)	16-1818516	TwinPower Turbine Non-Optic 4H PAR-4HUEX-KV (KaVo® MULTIflex® LUX*)
16-5357527	TwinPower Turbine 4H PAR-4HUEX-O-SR (Sirona® R/F*)	16-1818416	TwinPower Turbine Non-Optic 4H PAR-4HUEX-NK (NSK® FlexiQuick**)
16-5357519	TwinPower Turbine 4H PAR-4HUEX-O-WH (W&H® Roto Quick*)		
16-5357500	TwinPower Turbine 4H PAR-4HUEX-O-NK (NSK® FlexiQuick**)		
<b>TwinPower Turbine UltraM (With Optics) (Mini)</b>			
16-5356989	TwinPower Turbine 4H PAR-4HUMX-O (TwinPower Morita)		
16-5357578	TwinPower Turbine 4H PAR-4HUMX-O-KV (KaVo® MULTIflex® LUX*)		
16-5357608	TwinPower Turbine 4H PAR-4HUMX-O-SR (Sirona® R/F*)		
16-5357594	TwinPower Turbine 4H PAR-4HUMX-O-WH (W&H® Roto Quick*)		
16-5357586	TwinPower Turbine 4H PAR-4HUMX-O-NK (NSK® FlexiQuick**)		
<b>TwinPower Turbine 45 (With Optics) (45°)</b>		<b>TwinPower Turbine 45 (Non-Optic) (45°)</b>	
16-5344670	TwinPower Turbine 4H PAR-4HEX-O-45 (TwinPower Morita)	16-5361087	TwinPower Turbine 4H PAR-4HEX-45 (TwinPower Morita)
16-5350522	TwinPower Turbine 4H PAR-4HEX-O-KV-45 (KaVo® MULTIflex® LUX*)	16-5361079	TwinPower Turbine 4H PAR-4HEX-KV-45 (KaVo® MULTIflex® LUX*)
<b>TwinPower Turbine Basic</b>			
16-5360838	TwinPower Turbine 4H PAR-4HEX-B (4-Hole)		
<b>TwinPower Turbine 45 Basic (45°)</b>			
16-5606322	TwinPower Turbine 4H PAR-4HEX-B-45 (4-Hole)		
<b>TwinPower Morita Coupling Options</b>			
16-5354978	TwinPower coupling CP4-LD (with LED light)		
16-5354951	TwinPower coupling CP4-W-LD (with water adjustment & LED light)		
16-5333830	TwinPower coupling CP4-O (with light)		
16-5339421	TwinPower coupling CP4-WO (with water adjustment & light)		
16-5333881	TwinPower coupling CP4 (without light)		
16-5349214	TwinPower coupling CP5-O (with optics)		

\* KaVo MULTIflex LUX is a registered trademark of Kaltenbach & Voigt GmbH. Sirona is a registered trademark of Sirona Dental Systems GmbH. W&H and Roto Quick are registered trademarks of W&H Dental Bürmoos GmbH.  
 \*\* NSK and Phatelus are registered trademarks of NAKANISHI INC. Name of coupling varies by country.