

# Root ZX3 [HF Module] – Setup Guide

EO Endo.  
Optimized.

2024-04-21

Pub. No.: K337-80010-501 (en)



## ⚠ WARNING

This device is a dental electrosurgical unit (electric scalpel). Be sure to read the Instructions for Use carefully before use.

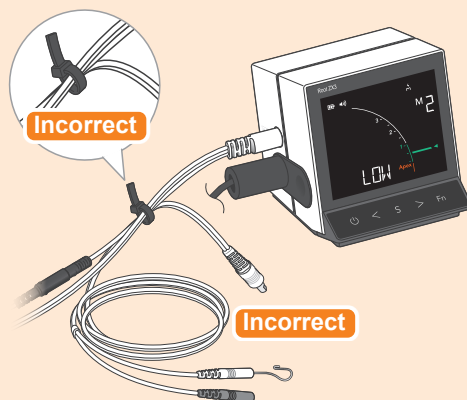
■ If improperly connected, unintentional current may be delivered and it can result in burns to the patient. Be sure to follow the instructions below.

### Do not bundle cords.

Do not bundle other cables or cords along with the HF probe cord nor place them close.

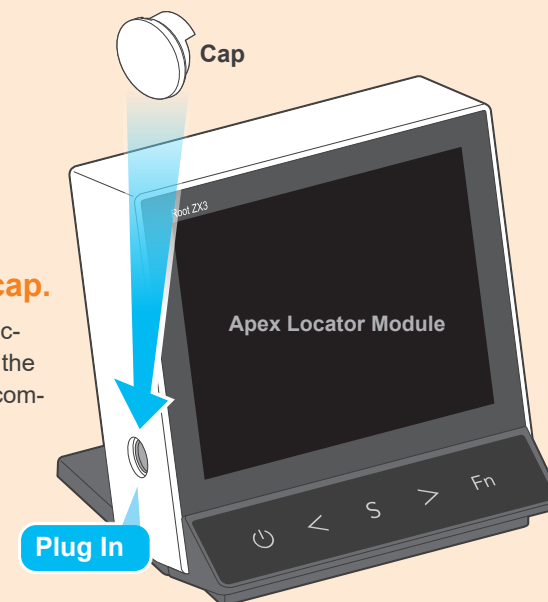
### Do not use components for the Apex Locator Module.

Store them separately from the HF Module under the specified environmental conditions.



### Plug the port with the cap.

To prevent incorrect cable connection, plug the connection port on the apex locator module with the accompanying cap while in use.



## ■ Precautions

### Do not use this device on patients with a pacemaker or cochlear implant.

Do not use this device on patients who have a pacemaker, ICD (Implantable Cardiac Defibrillator), or cochlear implant. Be sure to ask the patients about this before starting treatment.

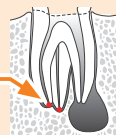
### Do not perform high-frequency conduction repeatedly to the same position.

(Limited to 3 times. If you wish to perform high-frequency conduction more than 3 times, wait a couple of minutes to allow the vicinity of the conduction target to cool down.)

Avoid performing high-frequency conduction continuously especially near the apex.

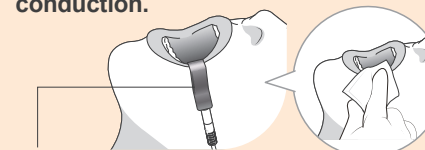
- To prevent damage to bones or the periodontal membrane.
- If there is no bony defect, do not perform high-frequency conduction at the apex. (For example, perform high-frequency conduction at least 1 mm above the apex.)

\* Before performing high-frequency conduction, make sure that the mandibular canal or the mental foramen is not located in the vicinity of the electrode with X-ray or CT images. Otherwise, nerves or blood vessels may be damaged.



### Prevention of temperature rise at the contact area of the contrary electrode.

Use the wide contrary electrode and grip when performing high-frequency conduction.



#### Wide Contrary Electrode Never use with M5.

If the corner of the patient's mouth is dry, try moistening it with a piece of gauze dampened with water. (Do not use ethanol [70 vol% to 80 vol%]; it will dehydrate.)

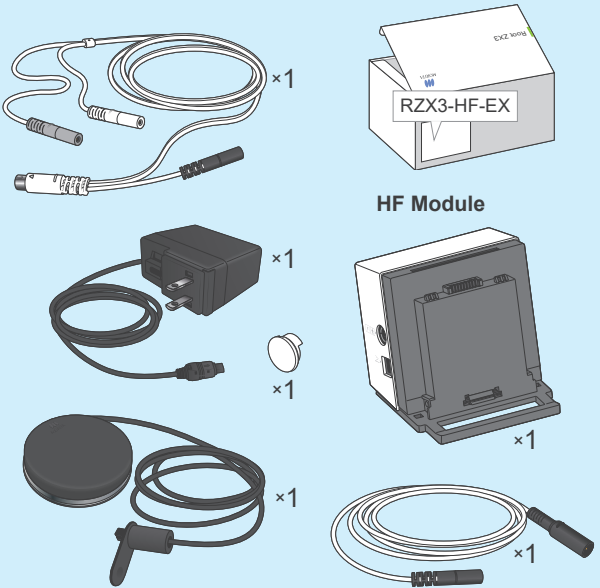
#### Grip

Guide the patient to hold the grip securely with their palm. Partially holding the grip is not enough area for proper conduction and it could result in burns to the patient.

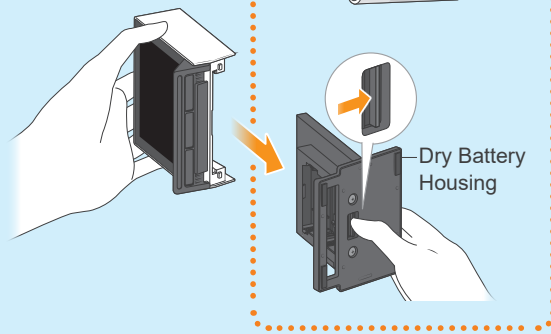
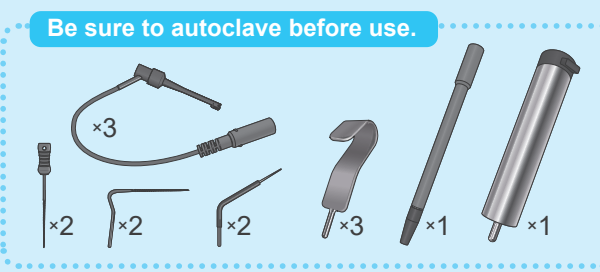
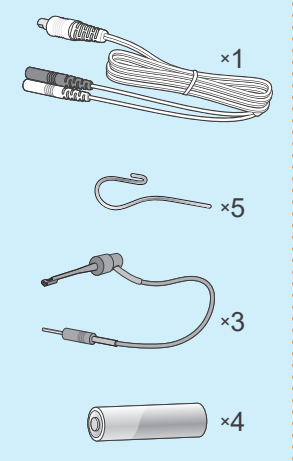
\* For details, refer to the accompanying Instructions for Use.

# 1 Check the Supplied Components.

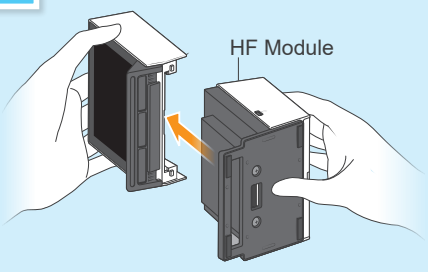
Verify that all the supplied components are included inside the boxes, and return any unused items to the box.



Return unused items to the box.

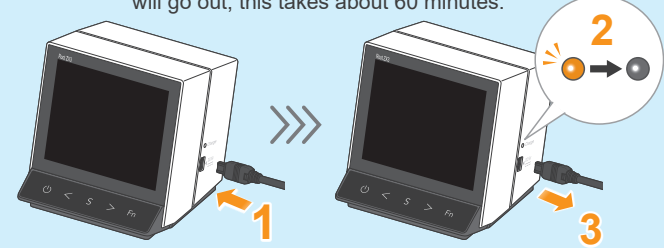


# 2 Install the HF Module.



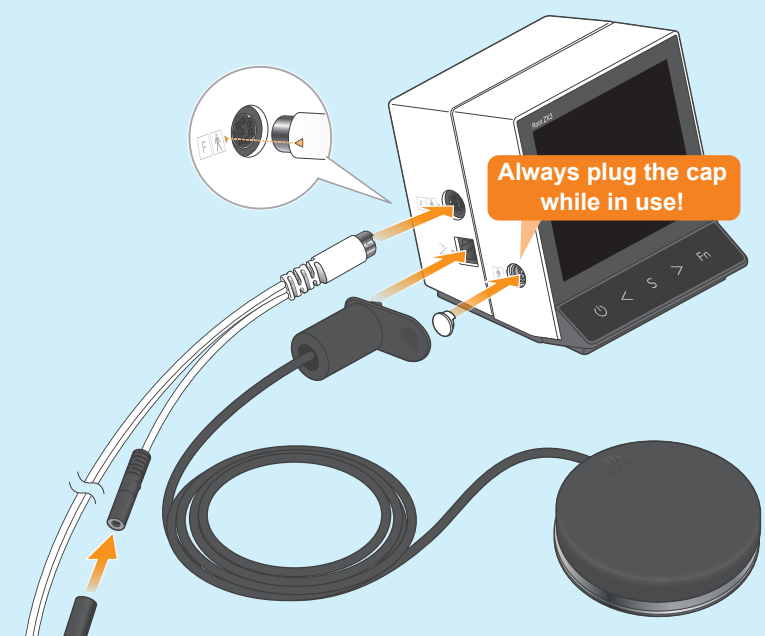
# 3 Charge the Battery Pack.

When the battery pack is fully charged, the charge LED will go out; this takes about 60 minutes.



# 4 Connect the Cords.

\* Make sure that the device is turned off when connecting the cords.



Use the connector color as a guide.

