

Thinking ahead. Focused on life.

# Morita CBCT Imaging

## Superior Quality & Maximum Patient Safety

Our goal is to provide you with the best, most accurate, and thorough diagnosis possible. Recent technological breakthroughs have allowed us to make major advances in our ability to achieve that goal. CBCT (Cone Beam Computed Tomography), also referred to as 3D, is a technology similar to CAT scans in that it will give us a 360°, three-dimensional view of the area we are examining.

Previously, we were limited to a two-dimensional picture of a three-dimensional problem. There were many things we could not see because dental X-rays did not have the resolution to show them. Despite our best efforts, we were forced to infer, project, surmise, calculate, and interpret. Often, we could only give our best educated guess based on what we could see on the X-ray. Additionally, X-rays were often not sensitive enough to show very small problems or early warning signs of complications.

That has all changed significantly with the advent of CBCT. With its extremely high resolution and exceptionally low radiation, it has literally changed our world with respect to what we can now see. CBCT imaging offers a large volume of information and subtle details that simply cannot be obtained by any two-dimensional X-ray, whether intraoral or panoramic. One 3D scan will allow us to examine the region of interest at a high resolution from many different perspectives. Clinical studies support this technology's improved diagnostic capabilities. We are very proud of CBCT and feel strongly that this state-of-the-art technology will allow us to provide our patients with the very highest level of care possible today.

The Morita unit we chose offers extremely low radiation dose. In addition, it features a dose reduction mode which further lowers exposure to a mere 60% of the standard mode.

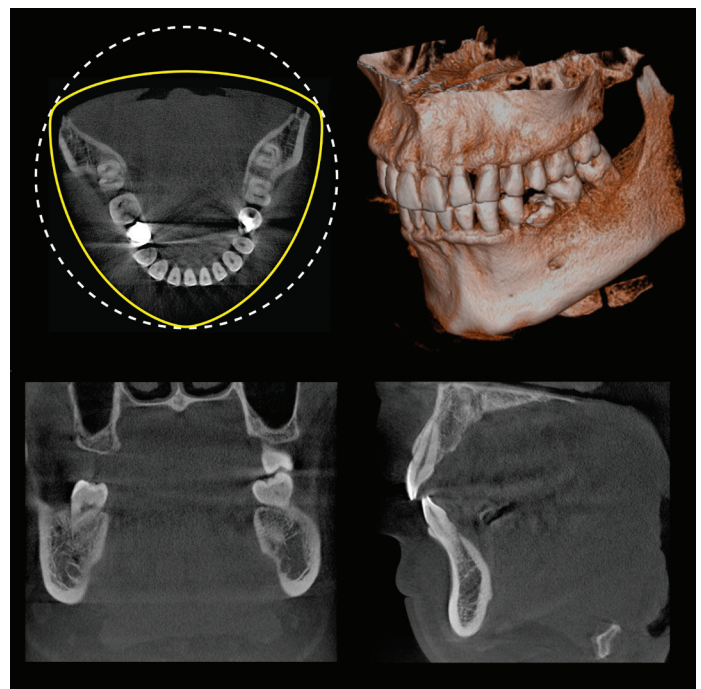
40 x 40 mm:

- Less than a medical chest X-ray
- Less than 1 standard panoramic X-ray
- Less than the amount of radiation absorbed during a flight from Los Angeles to New York (cosmic radiation)

100 x 80 mm:

- Less than a medical chest x-ray
- Less than the amount of radiation absorbed during a flight from New York to Asia

We look forward to providing you with exceptional care utilizing the most current and advanced technology available in dentistry.



*Reuleaux Full Arch field of view, indicated in yellow, is a Morita technology that can reduce radiation exposure up to 40%.*