

AdvErL Evo



Thinking ahead. Focused on life.

Er:YAG Laser Technology

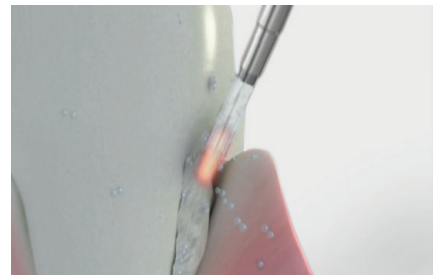
The Ideal Periodontic Solution



Periodontal Treatment

(incision, excision, vaporization, ablation and coagulation)

Removal of subgingival calculi
Laser soft tissue curettage



Removal of subgingival calculi

Soft Tissue Treatment

(incision, excision, vaporization, ablation and coagulation)

Gingival incision and excision
Hemostasis and coagulation
Frenectomy and frenotomy

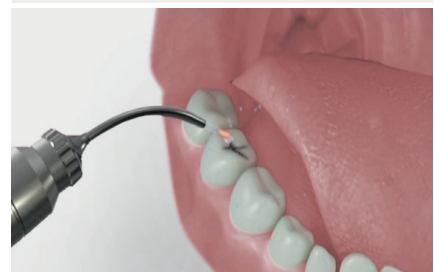


Gingival incision and excision

Hard Tissue Treatment

(ablation, vaporization)

Class I, II, III, IV and V cavity preparation
Caries removal



Caries removal

Periodontal Treatment Applications

AdvErL Evo is ideal for periodontal treatment. As an Er:YAG laser, the wavelength is readily absorbed by water and efficiently vaporizes soft tissue. Versatile, this unit offers a wide variety of tip options with an extensive selection for perio procedures. Its lightweight and flexible waveguide and powerful settings are also ideal for this specialty. Applications include removal of subgingival calculus, diseased, infected, inflamed and necrosed soft tissue within the periodontal pocket, subgingival calculus, and granulation tissue from bony defects. It may also be applied for soft tissue curettage, sulcular debridement, and osseous crown lengthening.

Smooth Handling

Easy Navigation

Easy Handling and Operation

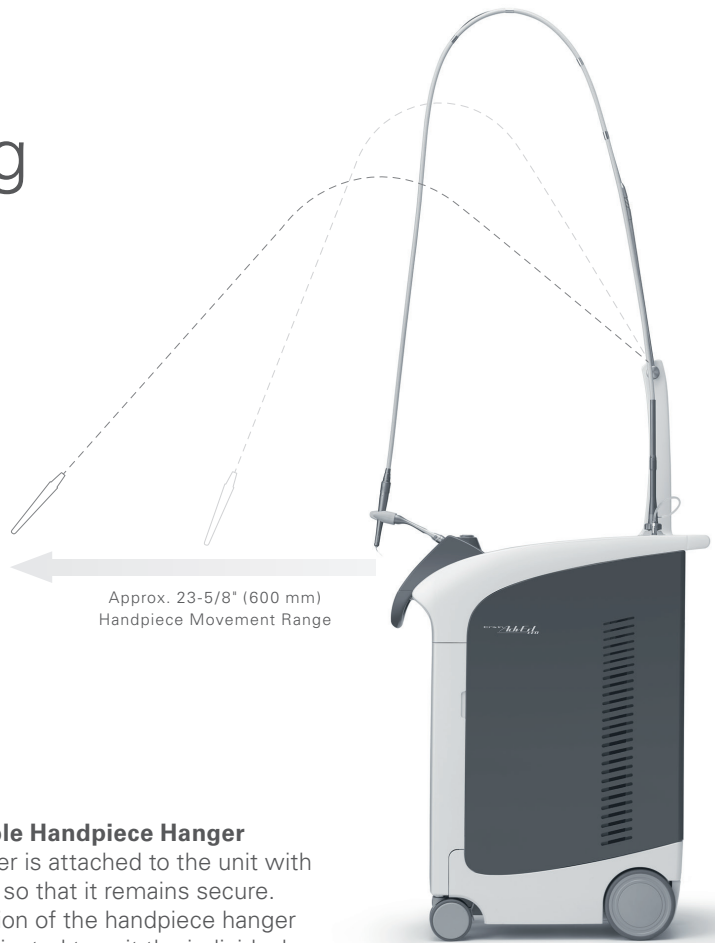
The hollow waveguide and waveguide support make the handpiece seem nearly weightless and allow the dentist to concentrate on the treatment procedure. The unit is also lightweight and can easily be moved with large castors and handles on both the front and back. To install, simply plug it in. The water and air systems are all built-in eliminating the need for complicated connections.

Intuitive Interface

The display is large, easy to read, and has an intuitive design. All settings can be easily confirmed at a glance. The completely flat surface is easy to clean. A usage log is saved on a flash memory stick that can easily be connected to a computer for review.

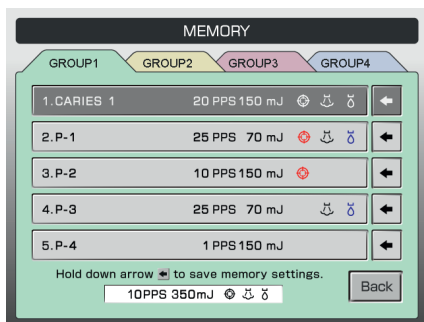
Adjustable Handpiece Hanger

The hanger is attached to the unit with a magnet so that it remains secure. The position of the handpiece hanger can be adjusted to suit the individual dentist.



Pre-Programmed Settings

There are 20 pre-programmed settings that can be easily retrieved.



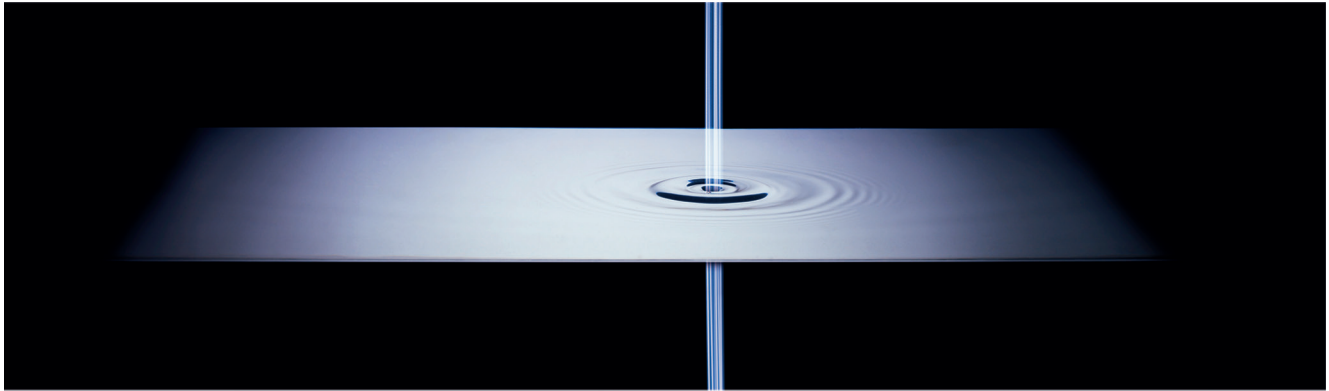
Infection Control

The handpiece hanger can be autoclaved for enhanced infection control.



Water and air systems are built-in

Revolutionary New Treatment for Peri-implantitis

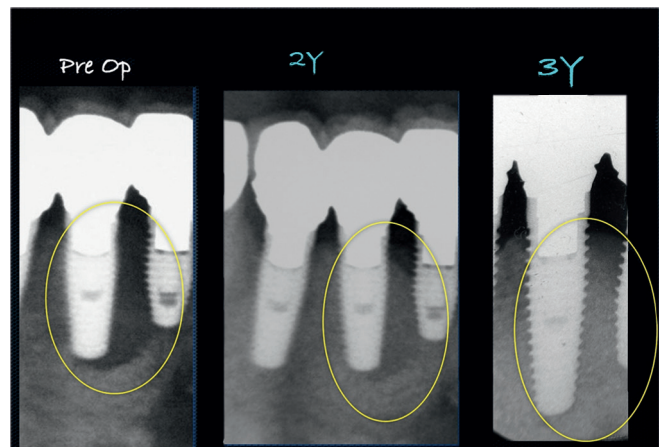


Peri-implantitis is a disease that currently poses a very challenging clinical problem. Research has shown no definitive, evidence based treatments that lead to a permanent and predictable outcome.

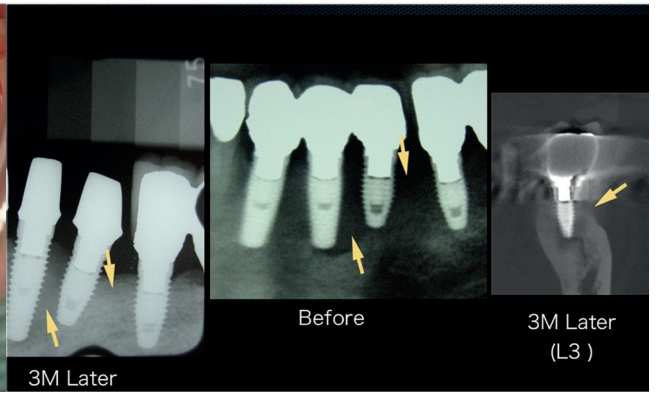
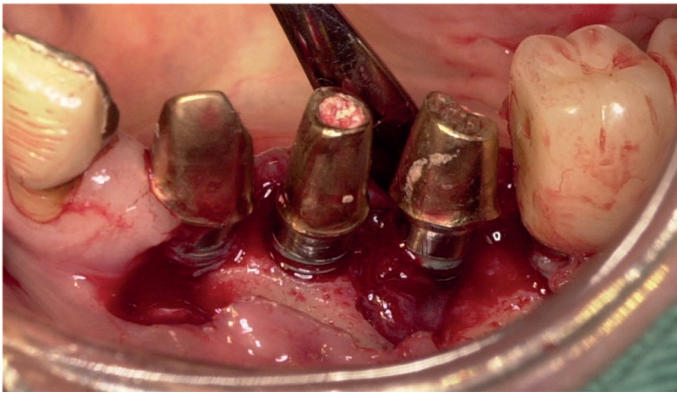
Now, under the leadership of Dr. Atsuhiko Yamamoto of the Japan Institute for Advanced Dental Studies, Perio-Implant Hospital AUTIS, an effective therapy has been developed that has achieved great success in Japan during the last 5 years. Using AdvErL Evo, the tissue will regenerate for long term and the bacteria is removed permanently by the utilization of micro-explosions produced by the laser's energy. It's an extremely low heat treatment which doesn't interfere with osseointegration and removes the contaminated titanium oxidized layer.

The micro-explosions are the key to this epoch-making treatment method. Micro-explosions exist when the laser energy is absorbed by water, the volume suddenly expands up to 1,000 times. A method has been found to exploit these micro-explosions so that both the contaminated matter on the implant surface and the layer of the contaminated oxidized titanium is removed. With this method, the surface is not scraped off; the titanium is peeled away.

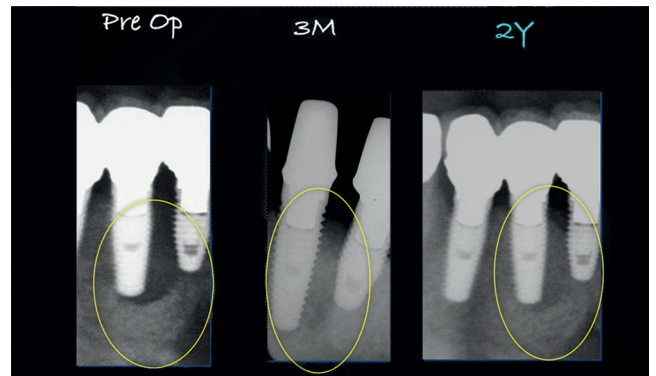
The unique property of AdvErL Evo is its wavelength. Compared to other lasers, the absorption of water is much greater.



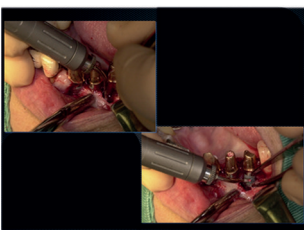
Clinical Case Study



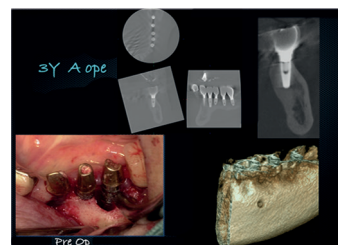
A female patient complained of swelling around an implant. An x-ray examination showed considerable transparency around the implant in the region of tooth 19. The superstructure was removed and it was observed that the implant was not loose. An examination determined that this was a cyst class D case.



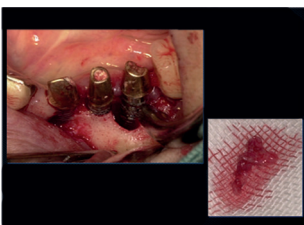
X-rays taken before treatment, 3 months after treatment and 2 years later. The implant has stabilized.



After opening a flap, bone loss and also granulation tissue were observed. The granulation tissue was removed with Er:YAG laser irradiation. (The key to removing this tissue is not to irradiate the tissue itself, but to irradiate the layer where the contaminated and healthy tissue meet.)




The CT and volume rendered images show that bone growth has been satisfactory and the implant has stabilized.



After removing the contaminated tissue, the oxidized layer on the implant was sterilized and peeled off.

Tip Options

A total of 17 tips are available for a wide range of treatments.

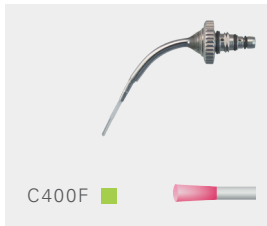
A standard tip set is included with purchase and is indicated by a green square . The other tips are optional and can be purchased separately.

The R series tips (bottom row) require an R-Attachment (both sold separately).



Standard Attachment

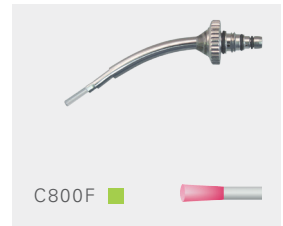
R-Attachment



C400F 



C600F 



C800F 



PS400TS 




PS600TS 



PS600T 



S600T 



P400T



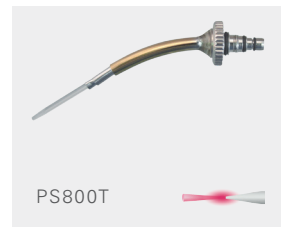
P400FL



PS400T



P600T



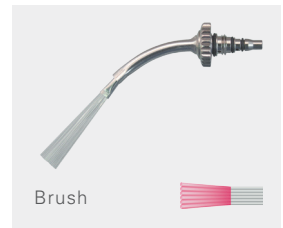
PS800T



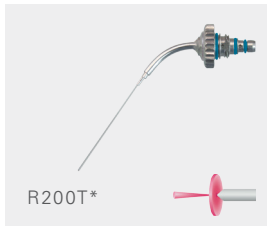
PS800TS



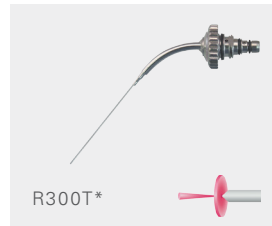
CF600



Brush



R200T*



R300T*

* Requires optional R-Attachment

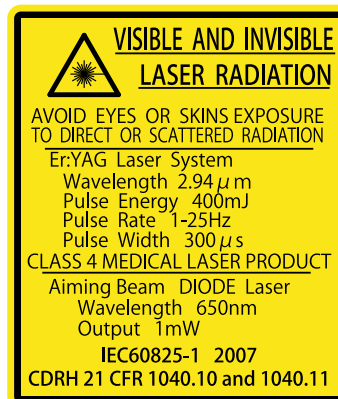
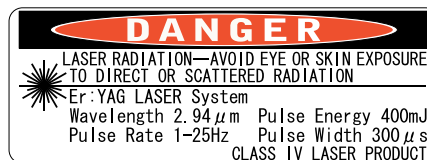
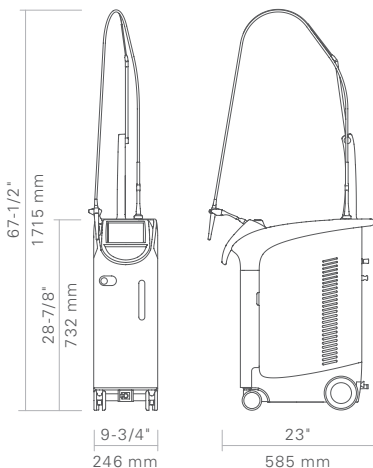
Specifications

Name:	AdvErL Evo
Model:	MEY-1-A
Power Rating:	AC 100V - 240V \pm 10% 50/60 Hz
Power Consumption:	1.5 kVA (at Maximum Laser Output)
Laser Classification:	Class 4 (Er:YAG), Class 2 (Aiming Beam)
Type of Laser:	Er:YAG
Wavelength:	2940 nm
Type of Operation:	Pulse
Laser Energy:	30~400 mJ at 1~10PPS 30~170 mJ at 20PPS 30~80 mJ at 25PPS
Pulse Repetition Rate:	1, 3.3, 5, 10, 20, 25PPS
Aiming Beam:	LD (Red)
Aiming Beam Wavelength:	650 \pm 15 nm
Type of Protection	
Against Electric Shock:	Class I
Degree of Protection	
Against Electric Shock:	Type B
Cooling Method:	Water Cooling (Built-in Reservoir)
Outer dimensions (WxDxH):	9-3/4" x 23" x 41-5/8" (246 mm x 585 mm x 1057 mm)
Weight:	Approx. 108 lb. (49 kg)

AdvErL Evo unit includes:

- (3) Laser safety glasses, (2) System keys, (5) Lens cleaner (25/pk), (1) Foot switch,
- (1) Remote interlock connector, (1) Hollow waveguide, (1) Hollow waveguide support,
- (1) Power cord, (2) Handpiece hangers, (2) Standard attachments, (1) Wheel locking device, (1)
- Grease applicator, (1) Deionization filter cartridge, (1) Deionized water tank (2.5 liters),
- (1) Drain tube, (1) Tip stand & the following AdvErL Evo starter tips: (1) C400F, (1) C600F,
- (1) C800F, (2) PS400TS, (1) PS600T, (1) PS600TS, (1) S600T

Dimensions





Development and Manufacturing

J. MORITA MFG. CORP.

680 Higashihama Minami-cho, Fushimi-ku,
Kyoto 612-8533, Japan
T +81. (0)75. 611 2141, F +81. (0)75. 622 4595

Morita Global Website

www.morita.com

Distribution

J. MORITA CORP.

3-33-18 Tarumi-cho, Suita-shi, Osaka 564-8650, Japan
T +81. (0)6. 6380 1521, F +81. (0)6. 6380 0585

J. MORITA USA, INC.

9 Mason, Irvine CA 92618, USA
T +1. 949. 581 9600, F +1. 949. 581 8811

J. MORITA EUROPE GMBH

Justus-von-Liebig-Strasse 27a, 63128 Dietzenbach, Germany
T +49. (0)6074. 836 0, F +49. (0)6074. 836 299

MORITA DENTAL ASIA PTE. LTD.

3 Science Park Drive,
#01-05 The Franklin Singapore Science Park1, Singapore 118223
T +65. 6779. 4795, F +65. 6777. 2279

J. MORITA CORP. AUSTRALIA & NEW ZEALAND

Suite 2.05, 247 Coward Street, Mascot NSW 2020, Australia
T +61. (0)2. 9667 3555, F +61. (0)2. 9667 3577

J. MORITA CORP. MIDDLE EAST

4 Tag Al Roasaa, Apartment 902, Saba Pacha 21311 Alexandria, Egypt
T +20. (0)3. 58 222 94, F +20. (0)3. 58 222 96

J. MORITA CORP. INDIA

Filix Office No.908, L.B.S. Marg, Opp. Asian Paints, Bhandup (West), Mumbai 400078, India
T +91-22-2595-3482

J. MORITA MFG. CORP. INDONESIA

28F, DBS Bank Tower, Jl. Prof. Dr. Satrio Kav. 3-5, Jakarta 12940, Indonesia
T +62-21-2988-8332, F + 62-21-2988-8201

SIAMDENT CO., LTD.

71/10 Mu 5, Thakham, Bangpakong, Chachuengsao 24130, Thailand
T +66. 38. 573042, F +66. 38. 573043
www.siamdent.com

Diagnostic and Imaging Equipment

Treatment Units

Handpieces and Instruments

Endodontic System

Laser Equipment

Laboratory Devices

Educational and Training Systems

Auxiliaries