



Development and Manufacturing  
**J. Morita Mfg. Corporation**  
680 Higashihama Minami-cho. Fushimi-ku,  
Kyoto-shi, Kyoto 612-8533. Japan  
T +81. (0)75. 611 2141, F +81. (0)75. 622 4595  
www.jmorita-mfg.com

**Morita Global Website**  
[www.morita.com](http://www.morita.com)

Distribution  
**J. Morita Corporation**  
3-33-18 Tarumi-cho. Suita-shi, Osaka 564-8650. Japan  
T +81. (0)6. 6380 1521, F +81. (0)6. 6380 0585

**J. Morita USA, Inc.**  
9 Mason. Irvine, California 92618. USA  
T +1. 949. 581 9600, F +1. 949. 465 1095

**J. Morita Europe GmbH**  
Justus-von-Liebig-Strasse 27a. 63128 Dietzenbach. Germany  
T +49. (0)6074. 836 0, F +49. (0)6074. 836 299

**J. Morita Corporation Australia & New Zealand**  
247 Coward Street, Suite 2.05. Mascot, NSW 2020. Australia  
T +61. (0)2. 9667 3555, F +61. (0)2. 9667 3577

**J. Morita Middle East**  
4 Tag Al Aoasaa. Saba Pasha, Alexandria 21311. Egypt  
T +20. (0)3. 582 2294, F +20. (0)3. 582 2296

**Siamdent Co., Ltd.**  
444 Olympia Thai Tower, 3rd Floor, Ratchadapisek Road.  
Samsennok, Huay Kwang, Bangkok 10310. Thailand  
T +66. (0)2. 512 6049, F +66. (0)2. 512 6099  
www.siamdent.com

Catalog Design:

Subject to technical changes and errors.  
SIGNO TYPE G20 TU110

Diagnostic and Imaging Equipment



Treatment Units



Handpieces and Instruments



Endodontic System



Laser Equipment



Laboratory Devices



Educational and Training Systems

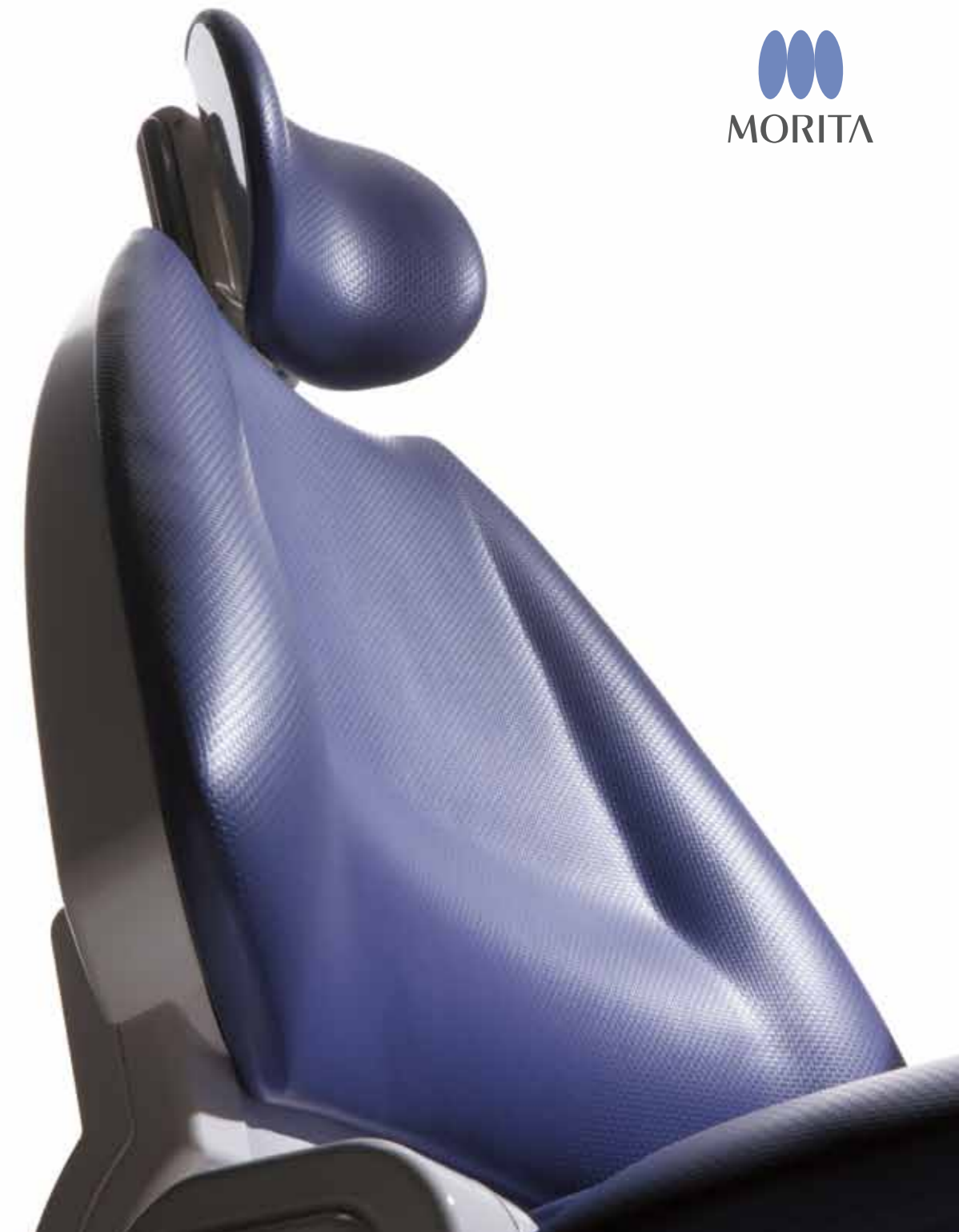


Auxiliaries



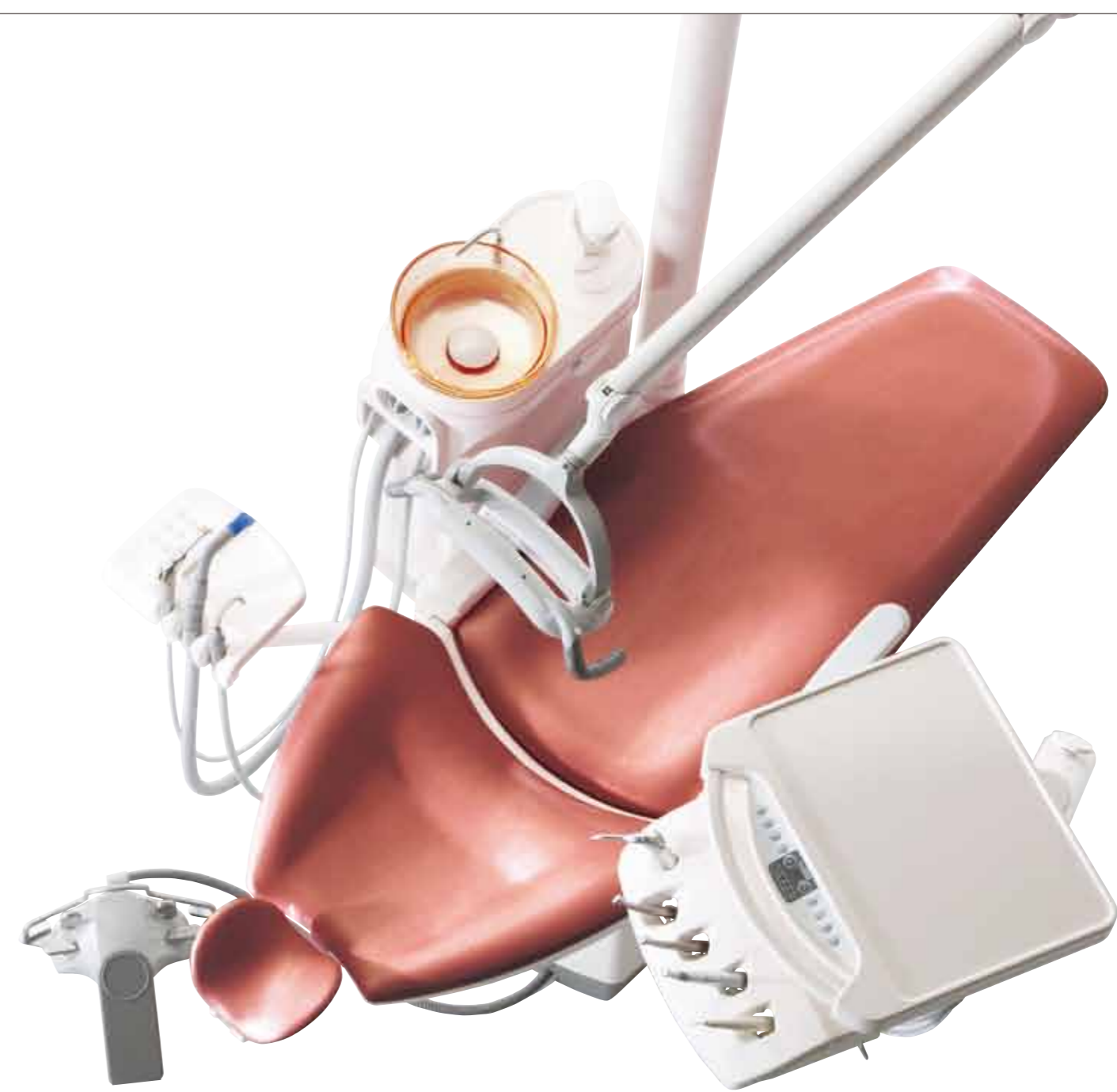
# SIGNO TYPE G20

Thinking ahead. Focused on life.



# Advanced Essential Performance

Ideal treatment unit for clinical performance and comfort for both patient and doctor.  
SIGNO TYPE G20 was created with advanced techniques as well as essential performance.  
Setting the new standard of the future, the choice is clear.



# Features

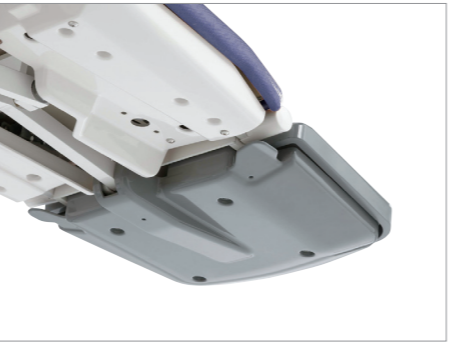
**Comfort – Is the embodiment of a warm heart to your patients.**



**Operators table / Instrument Holder**  
Doctors side table with a wide handle is easy to operate. The design of the instrument holder angle aids in effortless use of the handpieces with a natural movement.



**Seating**  
The backrest and seat are designed to support in comfort and safety. The leather upholstery surface has an attractive grid pattern soft to the eye and feel.



**New Safety Switch**  
A new design safety switch has been located on the underside of the backrest, eliminating the need for floor based mat switch. The new design negates the need to clean a mat.

**Functional Beauty – Born from simplicity**



**Luna Vue ES (LED Light)**  
"Luna Vue ES", the newly developed LED light features high illuminance, energy-saving, and long service life much more than a conventional halogen light.

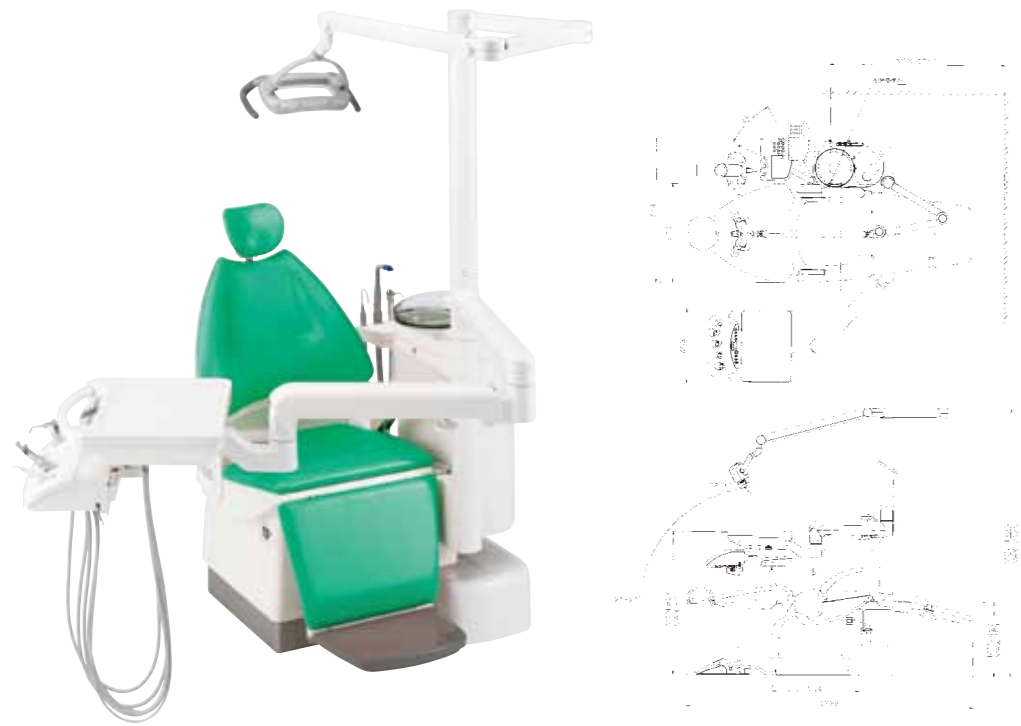


**Vacuum Syringe**  
The combination of a new design 16mm vacuum tip and syringe (with suction volume adjustment lever) provides 30% more suction than the conventional design. A rotating syringe which can also adjust the body angle is available as an option. \*1 L-Shaped type (110 degrees) \*2 Comparison with our conventional model



**New Design Cut Filter**  
The position of the cut filter is located on the outside of the unit where it is easy to reach. Because of its location, maintainability is enhanced.

# Table Arm Variation



Step  
G20 Fresh Green (G20 FG)



Contour  
G20 Shiny Silver (G20 SS)



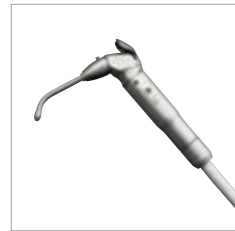
Step  
G20 Splash Yellow (G20 SY)



Contour  
G20 Sweet Brown (G20 SB)

# Accessories

## Standard



Three-way syringe  
(WS-201)



Vacuum syringe  
VS110  
(with suction power control lever)



Saliva ejector  
SE110  
(with suction power control lever)



Luna Vue ES Light



5-Socket instrument holder



Assistant tray



Foot controller  
(FC201)



Headrest  
(Articulated headrest)

## Option



Twinpower turbine  
<with optic>



TORX TR-91, TR-91-O  
(with optic)  
Straight handpiece (ST21U)  
Contra shank (US121L)  
Contra head (QL26B)



AIR TORX TRA-200  
Straight handpiece (ST21U)  
Contra shank (US121L)  
Contra head (QL26B)



Rotary type vacuum syringe



Luna Vue EL II Light



EL II mirror



Flushing system



Dental sterilization filters  
(water and air)



Foot controller  
<Extended function with lever>  
(FC201A)



Accessory table  
and paper holder  
(mounted on the light pole)



Paper holder  
(over arm type)



Movable armrest  
at the doctor position



Triple viewer LED (PFV95-LD)



Operating stool LN II (OS-LN II) 0  
Width 510mm (seat width 400mm)  
Depth 540mm (seat width 450mm)  
Seat Height 445-635mm  
Height Adjustable Range 190mm  
Weight Approx. 16kg

# Color



Green



Clear



Orange



Pink



G20 Shiny Silver  
(G20 SS)



G20 Splash Yellow  
(G20 SY)



G20 Honey Pink  
(G20 HP)



G20 Fresh Green  
(G20 FG)



G20 Sweet Brown  
(G20 SB)



G20 Cool Violet  
(G20 CV)



G20 Gloss Black  
(G20 GB)

# Specification

Name        SIGNO TYPE G20  
 Model        TU110  
 Source voltage    Adjusted to local line voltage  
 Power consumption  1.5KVA  
 Patient seat elevation system  
 Hydraulic pantograph system  
 Seat height    750mm MAX  
                   450mm MIN  
 Backseat tilt angle(from horizontal level)  
                   78°at upright position  
                   Tilt angle 2°  
 Weight        Approximately 240kg

## Accessories

### Standard

Three-way syringe(WS-201)  
 Vacuum syringe  VS110  
                   (with suction power control lever)  
 Saliva ejector    SE110  
                   (with suction power control lever)  
 Luna Vue ES Light  
 5-Socket instrument holder  
 Assistant tray  
 Foot controller(FC201)  
 Headrest(Articulated headrest)

## Option

Twinpower turbine<with optic>  
 TORX TR-91,TR-91-O(with optic)  
 Straight handpiece(ST21U)  
 Contra shank(US121)  
 Contra head(QL26B)  
 AIR TORX TRA-200  
 Straight handpiece(ST21U)  
 Contra shank(US121L)  
 Contra head(QL26B)  
 Rotary type vacuum syringe  
 Luna Vue EL Light  
 EL mirror  
 Flushing system  
 Dental sterilization filters(water and air)  
 Foot controller<Extended function with lever> (FC201A)  
 Accessory table (mounted on the light pole)  
 Accessory table and paper holder (mounted on the light pole)  
 Paper holder (over arm type)  
 Movable armrest at the doctor position  
 Triple viewer (PFV95)  
 Operating stool LN (OS-LN)

The product specifications and appearance are subject to change without notice.  
 The printed product colors may differ from the actual colors of the product.  
 The photographs in this catalog show the dental chair with some optional devices.